

# Giblor's

italian work/life specialist



ESSENTIAL  
COLLECTION

4	ITALIAN FAMILIES' STORY
6 ÷ 27	<b>Chef Style</b>
8	GIACCHE CHEF / <i>CHEF'S JACKETS</i>
20	PANTALONI CHEF / <i>CHEF'S PANTS</i>
22	GREMBIULI CHEF / <i>CHEF'S APRONS</i>
24	ACCESSORI CHEF / <i>CHEF'S ACCESSORIES</i>
28 ÷ 61	<b>Ho.Re.Ca. &amp; Service</b>
28	GREMBIULI / <i>APRONS</i>
44	ACCESSORI / <i>ACCESSORIES</i>
48	CAMICI / <i>COATS</i>
52	CASACCHE / <i>TUNICS</i>
62 ÷ 81	<b>Health&amp;Wellness</b>
64	CAMICI / <i>APRONS</i>
66	CASACCHE E PANTALONI / <i>TUNICS AND PANTS</i>
82	TESSUTI, TAGLIE E LAVAGGI <i>FABRICS, SIZES AND WASHING SYMBOLS</i>
86	INDICE ALFABETICO PRODOTTI <i>ALPHABETICAL INDEX OF PRODUCTS</i>

# ESSENTIAL

COLLECTION

# Torna l'appuntamento con il magazine che ti porta alla scoperta del mondo GIBLOR'S



Interviste, approfondimenti e articoli per raccontare tutte le attività, le collaborazioni e le novità del momento.

**Giblor's**  
italian worklife specialist

Richiedi una copia al tuo rivenditore Giblor's di fiducia oppure cercala su **GIBLORS.COM**

# Italian families story

Le belle storie iniziano sempre con impegno e passione. Se poi l'entusiasmo viene condiviso con qualcuno che crede in un progetto e collabora per farlo crescere, il futuro offre ancora più prospettive.

La famiglia Giberti lo ha imparato molti anni fa, fin da quando i fratelli Roberto e Loris decisero di rilanciare la piccola azienda sartoriale fondata dai genitori.

Negli stessi anni, l'azienda Rossini cresceva su presupposti simili, grazie all'impegno di Marco e delle due sorelle Wilma e Tiziana.

Due famiglie diverse che, insieme, contano quasi 100 anni di esperienza, idee, aspirazioni e una visione imprenditoriale legata alle radici e alla tradizione familiare.

Valori comuni che, ora, hanno portato il marchio GIBLOR'S ad entrare a far parte del gruppo Rossini Trading S.p.A. con l'intento di alzare ancora di più gli standard qualitativi nel settore dell'abbigliamento professionale in Italia.

Un'acquisizione che lascia alla guida di GIBLOR'S il suo AD storico, Roberto Giberti, in linea con l'approccio che ha permesso all'azienda di crescere e distinguersi per impegno artigianale, stile sartoriale, qualità, tecnologia e attenzione al design.

Competenze e valori che, in modi diversi ma affini, Rossini e GIBLOR'S hanno intrecciato come i fili di un'unica trama e che, da oggi, diventano gli elementi di un progetto più grande e importante.

Una nuova storia condivisa, con l'obiettivo di dividere i compiti, moltiplicare il successo e affrontare con determinazione tutte le sfide del futuro.

*Good stories always start with commitment and passion.*

*And if the enthusiasm is shared with someone who believes in a project and collaborates to make it grow, the future offers even more perspectives.*

*The Giberti family learned this many years ago, ever since the brothers Roberto and Loris decided to relaunch the small tailoring company founded by their parents.*

*In the same years, the Rossini company grew on similar assumptions, thanks to the commitment of Marco and the two sisters Wilma and Tiziana. Two different families that, together, have almost 100 years of experience, ideas, aspirations and an entrepreneurial vision linked to the roots and to the family tradition. Common values that, now, have led the GIBLOR'S brand to become part of the Rossini Trading S.p.A. group with the intention of raising even more the quality standards in the professional clothing sector in Italy. An acquisition that leaves its historic CEO, Roberto Giberti, at the helm of GIBLOR'S, in line with the approach that has allowed the company to grow and stand out for its craftsmanship, tailoring style, quality, technology and attention to design.*

*Skills and values that, in different but similar ways, Rossini and GIBLOR'S have intertwined like the threads of a single plot and which, from today, become the elements of a larger and more important project.*

*A new shared history, with the aim of dividing tasks, multiplying success and facing all the challenges of the future with determination.*

**GIBLOR'S**

italian worklife specialist

è un'azienda del gruppo

**ROSSINI.**







La linea **Giblor's Essential** nasce per soddisfare una fascia di consumatori molto attenta all'equilibrio qualità prezzo, e si deve alla grande esperienza maturata dal brand in quasi cinquant'anni di attività.

I capi che troverete nella linea **Essential Chef & Ho.re.ca.** infatti mantengono gli standard che contraddistinguono da sempre gli articoli a marchio **Giblor's** e sono studiati per garantire un'ottima vestibilità e il massimo comfort durante le ore di lavoro.

La collezione si compone di giacche classiche con bottoni estraibili, ma ospita anche giacche in tessuto cotone stretch.

Grande spazio è riservato ai grembiuli, in un'ampissima gamma di colori, da quelli in poli-cotone a quelli in poliestere no stiro, tutti corredati dai propri accessori.

# ESSENTIAL

## COLLECTION

*The **Giblor's Essential** line was created to satisfy a range of consumers who are very attentive to the balance between quality and price, and is due to the great experience gained by the brand in almost fifty years of activity.*

*The garments that you will find in the **Essential Chef & Ho.re.ca.** line in fact maintain the standards that have always distinguished **Giblor's** branded items and are designed to ensure an excellent fit and maximum comfort during working hours.*

*The collection consists of classic jackets with removable buttons, but also hosts jackets in stretch cotton fabric. Large space is reserved for aprons, in a very wide range of colors, from those in poly-cotton to those in non-iron polyester, all accompanied by their own accessories.*

## chef style

Giacche bottone a pressione  
*Press studs fastening jackets*

# AUGUSTIN

### Dettagli / Details

- Bottoni a pressione
- Taschino portapenne sulla manica

- *Press studs*
- *Pen pocket on sleeve*

### Taglie / Sizes

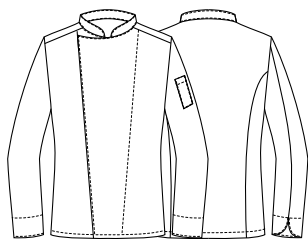
S ÷ 4XL Slim Fit

### Art. Q8G00187

C01 Bianco / *White*  
U32 Nero / *Black*

### Tessuto / Fabric

97% cotone 3% elasthan  
*97% cotton 3% elastane*  
185 g / m<sup>2</sup>



Art. Q8G00187  
U32 Nero / *Black*



COMFORT



Art. Q8G00187  
C01 Bianco / White

COMFORT

**Art. Q8G00188**  
U32 Nero / Black

## chef style

Giacche bottone a pressione  
Press studs fastening jackets

# CELINE

### Dettagli / Details

- Bottoni a pressione  
- Taschino portapenne sulla manica

- Press studs  
- Pen pocket on sleeve

### Taglie / Sizes

XS ÷ XXXL Slim Fit

### Art. Q8G00188

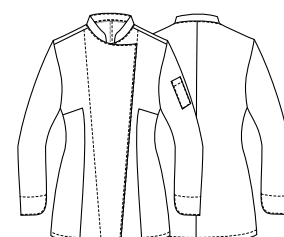
U32 Nero / Black  
C01 Bianco / White

### Tessuto / Fabric

97% cotone 3% elastan  
97% cotton 3% elastane  
185 g / m<sup>2</sup>



COMFORT



Art. Q8G00188  
C01 Bianco / White

## chef style

Giacche bottone a pressione  
*Press studs fastening jackets*

# PATRIZIO

### Dettagli / Details

- Bottoni a pressione
- Taschino sul petto
- Taschino portapenne sulla manica
- Inserti in rete
- Profilo grigio

- *Press studs*
- *Breast pocket*
- *Pen pocket on sleeve*
- *Network fabric panels*
- *Grey piping*

### Taglie / Sizes

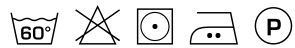
S ÷ 4XL Slim Fit

### Art. Q8G00190

U32 Nero / Black

### Tessuto / Fabric

65% poliestere 35% cotone  
65% polyester 35% cotton  
200 g / m<sup>2</sup>

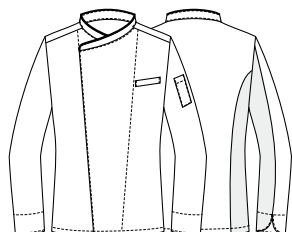
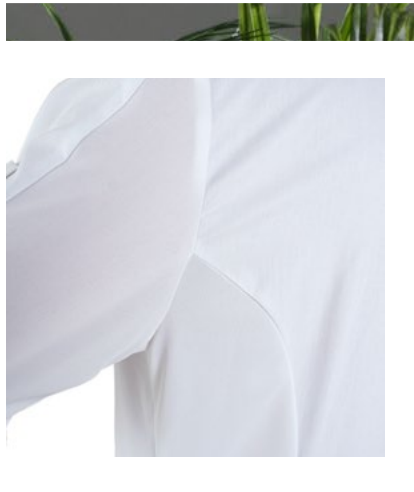


### Art. Q8G00189

C01 Bianco / White

### Tessuto / Fabric

100% cotone  
100% cotton  
185 g / m<sup>2</sup>



Art. Q8G00189  
C01 Bianco / White



Art. Q8G00190  
U32 Nero / Black

## chef style

Giacche bottone a pressione  
*Press studs fastening jackets*

# SUSI

### Dettagli / Details

- Bottoni a pressione
- Taschino sul petto
- Taschino portapenne sulla manica
- Inserti in rete
- Profilo grigio

- *Press studs*
- *Breast pocket*
- *Pen pocket on sleeve*
- *Network fabric panels*
- *Grey piping*

### Taglie / Sizes

XS ÷ 3XL Slim Fit

### Art. Q8G00191

C01 Bianco / White

### Tessuto / Fabric

100% cotone  
*100% cotton*  
185 g / m<sup>2</sup>

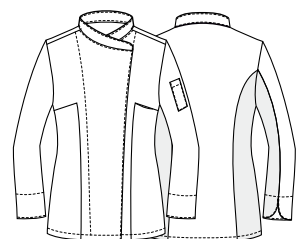


### Art. Q8G00192

U32 Nero / Black

### Tessuto / Fabric

65% poliestere 35% cotone  
*65% polyester 35% cotton*  
200 g / m<sup>2</sup>



**Art. Q8G00192**  
U32 Nero / Black



**Art. Q8G00191**  
C01 Bianco / White

## chef style

Giacche bottone a pressione  
*Press studs fastening jackets*

# PATRIZIO

### Dettagli / Details

- Bottoni a pressione
- Taschino sul petto
- Taschino portapenne sulla manica
- Inserti in rete
- Profilo tricolore italiano

- *Press studs*
- *Breast pocket*
- *Pen pocket on sleeve*
- *Network fabric panels*
- *Italian flag piping*

### Taglie / Sizes

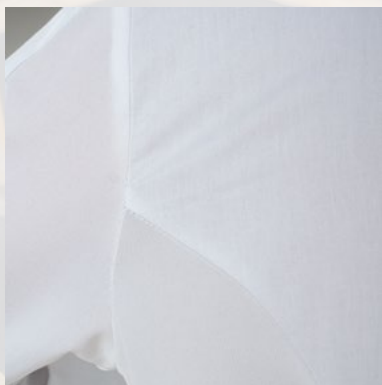
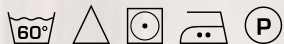
S ÷ 4XL Slim Fit

### Art. Q8G00189

P50 ITA / ITA

### Tessuto / Fabric

100% cotone  
*100% cotton*  
185 g / m<sup>2</sup>





## chef style

Giacche bottone a pressione  
Press studs fastening jackets

# SUSI

### Dettagli / Details

- Bottoni a pressione
- Taschino sul petto
- Taschino portapenne sulla manica
- Inserti in rete
- Profilo tricolore italiano

- Press studs
- Breast pocket
- Pen pocket on sleeve
- Network fabric panels
- Italian flag piping

### Taglie / Sizes

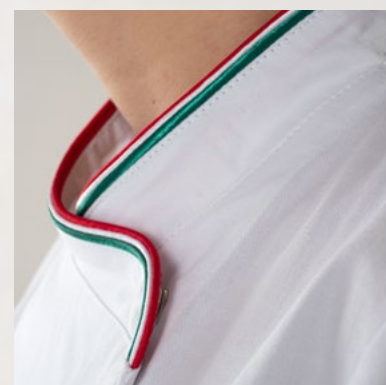
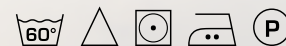
XS ÷ 3XL Slim Fit

### Art. Q8G00191

P50 ITA / ITA

### Tessuto / Fabric

100% cotone  
100% cotton  
185 g / m<sup>2</sup>



## chef style

Giacche bottone estraibile  
Removable buttons jackets

# ADRIANO

### Dettagli / Details

- Bottoni estraibili
- Taschino portapenne sulla manica

- Removable buttons
- Pen pocket on sleeve

### Taglie / Sizes

XS ÷ 5XL Slim Fit

### Art. Q8G00183

C01 Bianco / White

### Tessuto / Fabric

100% cotone  
100% cotton  
185 g / m<sup>2</sup>

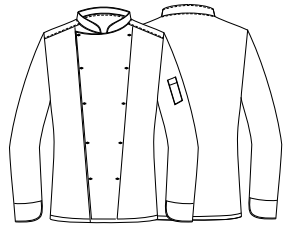


### Art. Q8G00184

U32 Nero / Black

### Tessuto / Fabric

65% poliestere 35% cotone  
65% polyester 35% cotton  
200 g / m<sup>2</sup>



### Art. Q8G00184

U32 Nero / Black



### Art. Q8G00183

C01 Bianco / White

**chef style**

Giacche bottone estraibile  
Removable buttons jackets

## TOMMASO

### Dettagli / Details

- Bottoni estraibili  
- Taschino portapenne sulla manica

- Removable buttons  
- Pen pocket on sleeve

### Taglie / Sizes

XS ÷ 5XL Slim Fit

### Art. Q8G00185

C01 Bianco / White

### Tessuto / Fabric

100% cotone  
100% cotton  
185 g / m<sup>2</sup>

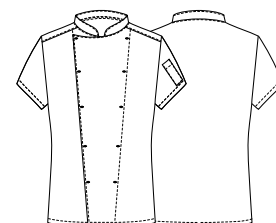
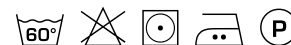


### Art. Q8G00186

U32 Nero / Black

### Tessuto / Fabric

65% poliestere 35% cotone  
65% polyester 35% cotton  
200 g / m<sup>2</sup>



### Art. Q8G00186

U32 Nero / Black

### Art. Q8G00185

C01 Bianco / White

## chef style

Pantaloni  
Pants

# PLUTONE

### Dettagli / Details

- 2 tasche
- 1 tasca sul retro
- Elastico e coulisse

- 2 pockets
- 1 rear pocket
- Elasticated waistband with drawstring

### Taglie / Sizes

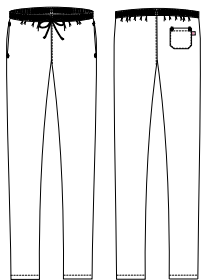
XS ÷ 5XL Slim Fit

### Art. Q8P00194

U32 Nero / Black

### Tessuto / Fabric

65% poliestere 35% cotone  
65% polyester 35% cotton  
200 g / m<sup>2</sup>





## PLUTONE

### Dettagli / Details

- 2 tasche
- 1 tasca sul retro
- Elastico e coulisse

- 2 pockets
- 1 rear pocket
- Elasticated waistband with drawstring

### Taglie / Sizes

XS ÷ 5XL Slim Fit

### Art. Q8P00195

Q32 - Quadro nero / Black check

### Tessuto / Fabric

100% cotone  
100% cotton  
200 g / m<sup>2</sup>

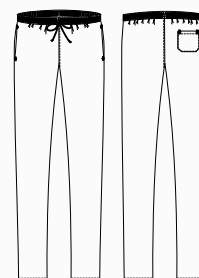


### Art. Q8P00193

C01 Bianco / White

### Tessuto / Fabric

100% cotone  
100% cotton  
185 g / m<sup>2</sup>



# GIUNONE

## Dettagli / Details

- Baschina per nascondere il laccio
- *Basque to hide the string*

## Taglie / Sizes

Taglia unica / One size

## Misure / Dimensions

90x100 cm

### Art. Q8H00196

C01 Bianco / White

P50 ITA / ITA

### Tessuto / Fabric

100% cotone

100% cotton

185 g / m<sup>2</sup>

### Art. Q8H00197

U32 Nero / Black

### Tessuto / Fabric

65% poliestere 35% cotone

65% polyester 35% cotton

200 g / m<sup>2</sup>



### Art. Q8H00196

C01 Bianco / White



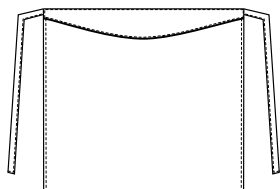
### Art. Q8H00196

P50 ITA / ITA



### Art. Q8H00197

U32 Nero / Black





**Art. Q8H00201**  
U32 Nero / Black

65% poliestere 35% cotone  
65% polyester 35% cotton  
200 g / m<sup>2</sup>



**Art. Q8H00200**  
C01 Bianco / White

100% cotone  
100% cotton  
185 g / m<sup>2</sup>



## ANCONA

**Dettagli / Details**

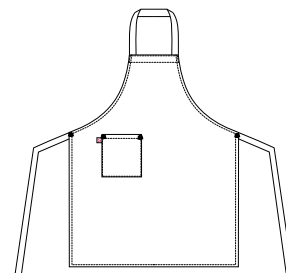
- 1 tasca
- 1 pocket

**Taglie / Sizes** Taglia unica / One size

**Misure / Dimensions** 100x73 cm

**Art. Q8H00201**  
U32 Nero / Black

**Art. Q8H00200**  
C01 Bianco / White



## MATERA

**Dettagli / Details**

- 1 tasca
- 1 pocket

**Taglie / Sizes** Taglia unica / One size

**Misure / Dimensions** 75x105 cm

**Art. Q8H00199**  
C01 Bianco / White



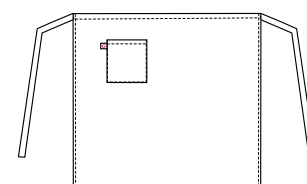
**Art. Q8H00199**  
C01 Bianco / White

100% cotone  
100% cotton  
185 g / m<sup>2</sup>



**Art. Q8H00198**  
C01 Bianco / White

100% cotone  
100% cotton  
185 g / m<sup>2</sup>



## BARI

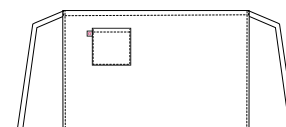
**Dettagli / Details**

- 1 tasca
- 1 pocket

**Taglie / Sizes** Taglia unica / One size

**Misure / Dimensions** 45x80 cm

**Art. Q8H00198**  
C01 Bianco / White



## accessori

Toque

Toque

# KLIMT

### Dettagli / Details

- Regolabile con elastico
- Adjustable with elastic

### Taglie / Sizes

Taglia unica / One size

### Art. Q5I00203

C01 Bianco / White  
P50 ITA / ITA

### Tessuto / Fabric

100% cotone / cotton  
185 g / m<sup>2</sup>



### Art. Q5I00203

C01 Bianco / White



### Art. Q5I00203

P50 ITA / ITA



### Art. Q5I00204

U32 Nero / Black

### Tessuto / Fabric

65% poliestere 35% cotone  
65% polyester 35% cotton  
200 g / m<sup>2</sup>



### Art. Q5I00204

U32 Nero / Black



### Art. Q5I00202

C01 Bianco / White



# CAPPELLO SCUOLA

### Taglie / Sizes

Taglia unica / One size

### Art. Q5I00202

C01 Bianco / White

### Tessuto / Fabric

100% cotone / cotton  
185 g / m<sup>2</sup>

# MONET

### Taglie / Sizes

Taglia unica / One size

### Art. Q5I00205

C01 Bianco / White

### Tessuto / Fabric

100% cotone / cotton  
180 g / m<sup>2</sup>

### Art. Q5I00206

U32 Nero / Black

### Tessuto / Fabric

65% poliestere 35% cotone  
65% polyester 35% cotton  
180 g / m<sup>2</sup>



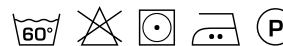
### Art. Q5I00205

C01 Bianco / White



### Art. Q5I00206

U32 Nero / Black



# BANDANA

### Taglie / Sizes

Taglia unica / One size

### Art. Q5I00263

C01 Bianco / White  
U32 Nero / Black

### Tessuto / Fabric

65% poliestere 35% cotone  
65% polyester 35% cotton  
143 g / m<sup>2</sup>



### Art. Q5I00263

C01 Bianco  
White



### Art. Q5I00263

U32 Nero  
Black





# COPRICAPO

**Taglie / Sizes**

Taglia unica / One size

**Art. 301**

00 Bianco / White

**Tessuto / Fabric**

Rete 100% poliestere  
Network fabric 100% polyester

**Art. 302/E**

00 Bianco / White

**Tessuto 1 / Fabric 1**  
100% cotone / cotton

**Tessuto 2 / Fabric 2**

Rete 100% poliestere  
Network fabric 100% polyester



**Art. 301**

00 Bianco  
White



**Art. 302/E**

00 Bianco  
White



**Art. Q5100265**

C01 Bianco / White



**Art. Q5100266**

U32 Nero / Black



# ANDY TRIANGOLO CUOCO

**Art. Q5100265**

C01 Bianco / White

**Misure / Dimensions**  
67,5X67,5 cm

**Tessuto / Fabric**

100% cotone / cotton  
220 g / m<sup>2</sup>

**Art. Q5100266**

U32 Nero / Black

**Misure / Dimensions**  
67,5X67,5 cm

**Tessuto / Fabric**

65% poliestere 35% cotone  
65% polyester 35% cotton  
200 g / m<sup>2</sup>



**Art. R140**

C01 Bianco / White



**Art. R140**

C01 Bianco / White

**Misure / Dimensions**  
90X90 cm

**Tessuto / Fabric**

100% cotone / cotton  
140 g / m<sup>2</sup>



**405/E**



**405/E**



**405/E**

Art. 405/E: venduto in confezioni da 12 pezzi. Articolo aleatorio: non è possibile scegliere l'assortimento colore.  
Art. 405/E: 12 pieces pack. Random color: the choice of the color is not allowed.



# TORCIONE

**Misure / Dimensions**  
56X80 cm

**Art. 405/E**

Colori assortiti / Assorted colors

**Tessuto / Fabric**

100% cotone / cotton

**Giblor's**  
italian work*life* specialist

Giacca  
**PATRIZIO**  
pag. 16



# ZANTE

## Dettagli / Details

- 2 grandi tasche
- Allacciatura collo regolabile

- 2 big pockets
- Adjustable halter

## Taglie / Sizes

Taglia unica / One size

## Misure / Dimensions

66x92 cm

## Art. Q1H00212

C02 Grigio chiaro / Light grey

U32 Nero / Black

U35 Bordeaux / Bordeaux

Z41 Tortora / Taupe

Z43 Militare / Military green

Z44 Marrone / Brown

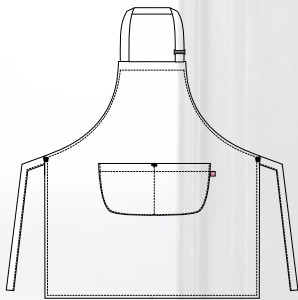
Z48 Blu / Blue

## Tessuto / Fabric

65% poliestere 35% cotone

65% polyester 35% cotton

200 g / m<sup>2</sup>



Art. Q1H00212

Z43 Militare / Military green



**Art. Q1H00212**  
C02 Grigio chiaro / Light grey



**Art. Q1H00212**  
U32 Nero / Black



**Art. Q1H00212**  
U35 Bordeaux / Bordeaux



**Art. Q1H00212**  
Z41 Tortora / Taupe



**Art. Q1H00212**  
Z43 Militare / Military green



**Art. Q1H00212**  
Z44 Marrone / Brown



**Art. Q1H00212**  
Z48 Blu / Blue

## ho.re.ca. & services

Grembiuli

Aprons

# MATERA

### Dettagli / Details

- 1 tasca
- 1 pocket

### Taglie / Sizes

Taglia unica / One size

### Misure / Dimensions

75x105 cm

### Art. Q1H00213

C02 Grigio chiaro / Light grey

U32 Nero / Black

U35 Bordeaux / Bordeaux

Z41 Tortora / Taupe

Z43 Militare / Military green

Z44 Marrone / Brown

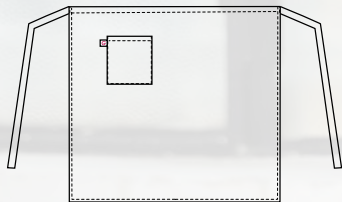
Z48 Blu / Blue

### Tessuto / Fabric

65% poliestere 35% cotone

65% polyester 35% cotton

200 g / m<sup>2</sup>



Art. Q1H00213  
01 Blu / Blue



**Art. Q1H00213**  
C02 Grigio chiaro / Light grey



**Art. Q1H00213**  
U32 Nero / Black



**Art. Q1H00213**  
U35 Bordeaux / Bordeaux



**Art. Q1H00213**  
Z41 Tortora / Taupe



**Art. Q1H00213**  
Z43 Militare / Military green



**Art. Q1H00213**  
Z44 Marrone / Brown



**Art. Q1H00213**  
Z48 Blu / Blue

# BARI

## Dettagli / Details

- 1 tasca
- 1 pocket

## Taglie / Sizes

Taglia unica / One size

## Misure / Dimensions

45x80 cm

## Art. Q1H00214

C02 Grigio chiaro / Light grey

U32 Nero / Black

U35 Bordeaux / Bordeaux

Z41 Tortora / Taupe

Z43 Militare / Military green

Z44 Marrone / Brown

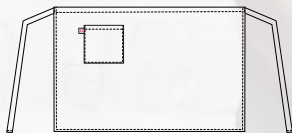
Z48 Blu / Blue

## Tessuto / Fabric

65% poliestere 35% cotone

65% polyester 35% cotton

200 g / m<sup>2</sup>



Art. Q1H00214  
U35 Bordeaux / Bordeaux





**Art. Q1H00214**  
C02 Grigio chiaro / Light grey



**Art. Q1H00214**  
U32 Nero / Black



**Art. Q1H00214**  
U35 Bordeaux / Bordeaux



**Art. Q1H00214**  
Z41 Tortora / Taupe



**Art. Q1H00214**  
Z43 Militare / Military green



**Art. Q1H00214**  
Z44 Marrone / Brown



**Art. Q1H00214**  
Z48 Blu / Blue

# LIPARI

## Dettagli / Details

- 1 grande tasca
- 2 taschini portapenne
- Allacciatura collo regolabile con bottoni

- 1 big pocket
- 2 pen pockets
- Adjustable halter with buttons

## Taglie / Sizes

Taglia unica / One size

## Misure / Dimensions

68x88 cm

## Art. Q1H00207

U32 Nero / Black

Z44 Marrone / Brown

U33 Caffè / Coffee

U35 Bordeaux / Bordeaux

Z46 Fucsia / Fuchsia

D25 Rosso / Red

D24 Arancio / Orange

C03 Giallo / Yellow

C09 Pistacchio / Pistachio

Z49 Verde scuro / Dark green

Z48 Blu / Blue

U38 Bluette / Royal

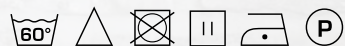
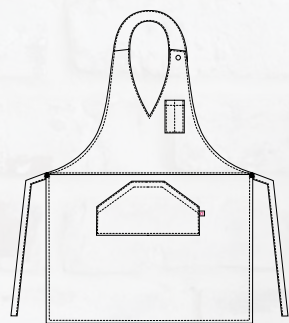
D28 Turchese / Turquoise

## Tessuto / Fabric

100% poliestere

100% polyester

220 g / m<sup>2</sup>





**Art. Q1H00207**  
U32 Nero / Black



**Art. Q1H00207**  
Z44 Marrone / Brown



**Art. Q1H00207**  
U33 Caffè / Coffee



**Art. Q1H00207**  
U35 Bordeaux / Bordeaux



**Art. Q1H00207**  
Z46 Fucsia / Fuchsia



**Art. Q1H00207**  
D25 Rosso / Red



**Art. Q1H00207**  
D24 Arancio / Orange



**Art. Q1H00207**  
C03 Giallo / Yellow



**Art. Q1H00207**  
C09 Pistacchio / Pistachio



**Art. Q1H00207**  
Z49 Verde scuro / Dark green



**Art. Q1H00207**  
Z48 Blu / Blue



**Art. Q1H00207**  
U38 Bluette / Royal



**Art. Q1H00207**  
D28 Turchese / Turquoise



**Art. Q1H00210**  
U32 Nero / Black



**Art. Q1H00210**  
Z44 Marrone / Brown



**Art. Q1H00210**  
U33 Caffè / Coffee



**Art. Q1H00210**  
U35 Bordeaux / Bordeaux



**Art. Q1H00210**  
Z46 Fucsia / Fuchsia



**Art. Q1H00210**  
D25 Rosso / Red



**Art. Q1H00210**  
D24 Arancio / Orange



**Art. Q1H00210**  
C03 Giallo / Yellow



**Art. Q1H00210**  
C09 Pistacchio / Pistachio



**Art. Q1H00210**  
Z49 Verde scuro / Dark green



**Art. Q1H00210**  
Z48 Blu / Blue



**Art. Q1H00210**  
U38 Bluette / Royal



**Art. Q1H00210**  
D28 Turchese / Turquoise

# POSITANO

## Dettagli / Details

- 2 tasche  
Coperto dietro

- 2 pockets  
Covered backside

## Taglie / Sizes

Taglia unica / One size

## Misure / Dimensions

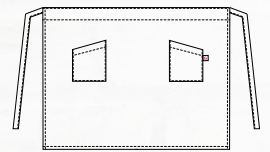
68x59 cm

## Art. Q1H00210

U32 Nero / Black  
Z44 Marrone / Brown  
U33 Caffè / Coffee  
U35 Bordeaux / Bordeaux  
Z46 Fucsia / Fuchsia  
D25 Rosso / Red  
D24 Arancio / Orange  
C03 Giallo / Yellow  
C09 Pistacchio / Pistachio  
Z49 Verde scuro / Dark green  
Z48 Blu / Blue  
U38 Bluette / Royal  
D28 Turchese / Turquoise

## Tessuto / Fabric

100% poliestere  
100% polyester  
220 g / m<sup>2</sup>



Art. Q1H00210  
U32 Nero / Black

## ho.re.ca. & services

Grembiuli

Aprons

# PUB

### Dettagli / Details

- 3 grandi tasche

- 3 big pockets

### Taglie / Sizes

Taglia unica / One size

### Misure / Dimensions

51x32 cm

### Art. Q1H00211

U32 Nero / Black

Z44 Marrone / Brown

U33 Caffè / Coffee

U35 Bordeaux / Bordeaux

Z46 Fucsia / Fuchsia

D25 Rosso / Red

D24 Arancio / Orange

C03 Giallo / Yellow

C09 Pistacchio / Pistachio

Z49 Verde scuro / Dark green

Z48 Blu / Blue

U38 Bluette / Royal

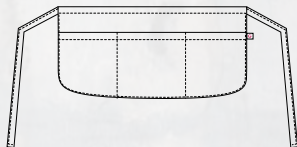
D28 Turchese / Turquoise

### Tessuto / Fabric

100% poliestere

100% polyester

220 g / m<sup>2</sup>



Art. Q1H00211  
U32 Nero / Black



**Art. Q1H00211**  
U32 Nero / Black



**Art. Q1H00211**  
Z44 Marrone / Brown



**Art. Q1H00211**  
U33 Caffè / Coffee



**Art. Q1H00211**  
U35 Bordeaux / Bordeaux



**Art. Q1H00211**  
Z46 Fucsia / Fuchsia



**Art. Q1H00211**  
D25 Rosso / Red



**Art. Q1H00211**  
D24 Arancio / Orange



**Art. Q1H00211**  
C03 Giallo / Yellow



**Art. Q1H00211**  
C09 Pistacchio / Pistachio



**Art. Q1H00211**  
Z49 Verde scuro / Dark green



**Art. Q1H00211**  
Z48 Blu / Blue



**Art. Q1H00211**  
U38 Bluette / Royal



**Art. Q1H00211**  
D28 Turchese / Turquoise

# CAPRI

## Dettagli / Details

- 2 taschini portapenne
- 2 tasche
- Allacciatura collo regolabile con bottoni

- 2 pen pockets
- 2 pockets
- Adjustable halter with buttons

## Taglie / Sizes

Taglia unica / One size

## Misure / Dimensions

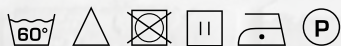
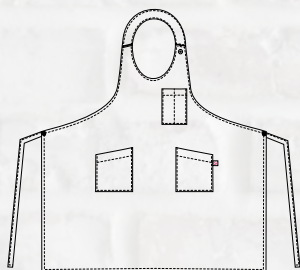
81x122,5 cm

## Art. Q1H00208

- U32 Nero / Black
- Z44 Marrone / Brown
- U33 Caffè / Coffee
- U35 Bordeaux / Bordeaux
- Z46 Fucsia / Fuchsia
- D25 Rosso / Red
- D24 Arancio / Orange
- C03 Giallo / Yellow
- C09 Pistacchio / Pistachio
- Z49 Verde scuro / Dark green
- Z48 Blu / Blue
- U38 Bluette / Royal
- D28 Turchese / Turquoise

## Tessuto / Fabric

- 100% poliestere
- 100% polyester
- 220 g / m<sup>2</sup>



Art. Q1H00208  
U35 Bordeaux / Bordeaux





**Art. Q1H00208**  
U32 Nero / Black



**Art. Q1H00208**  
Z44 Marrone / Brown



**Art. Q1H00208**  
U33 Caffè / Coffee



**Art. Q1H00208**  
U35 Bordeaux / Bordeaux



**Art. Q1H00208**  
Z46 Fucsia / Fuchsia



**Art. Q1H00208**  
D25 Rosso / Red



**Art. Q1H00208**  
D24 Arancio / Orange



**Art. Q1H00208**  
C03 Giallo / Yellow



**Art. Q1H00208**  
C09 Pistacchio / Pistachio



**Art. Q1H00208**  
Z49 Verde scuro / Dark green



**Art. Q1H00208**  
Z48 Blu / Blue



**Art. Q1H00208**  
U38 Bluette / Royal



**Art. Q1H00208**  
D28 Turchese / Turquoise

# LATINA

## Dettagli / Details

- 1 taschino portapenne
- 1 grande tasca
- Allacciatura collo regolabile con bottoni

- 1 pen pocket
- 1 big pocket
- Adjustable halter with buttons

## Taglie / Sizes

Taglia unica / One size

## Misure / Dimensions

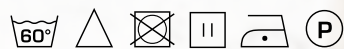
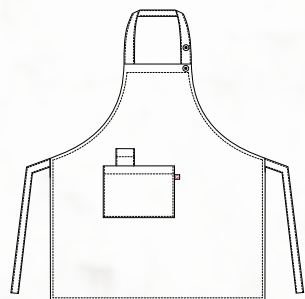
81x122,5 cm

## Art. Q1H00209

- U32 Nero / Black
- Z44 Marrone / Brown
- U33 Caffè / Coffee
- U35 Bordeaux / Bordeaux
- Z46 Fucsia / Fuchsia
- D25 Rosso / Red
- D24 Arancio / Orange
- C03 Giallo / Yellow
- C09 Pistacchio / Pistachio
- Z49 Verde scuro / Dark green
- Z48 Blu / Blue
- U38 Bluette / Royal
- D28 Turchese / Turquoise

## Tessuto / Fabric

- 100% poliestere
- 100% polyester
- 220 g / m<sup>2</sup>



Art. Q1H00209  
D25 Rosso / Red



**Art. Q1H00209**  
U32 Nero / Black



**Art. Q1H00209**  
Z44 Marrone / Brown



**Art. Q1H00209**  
U33 Caffè / Coffee



**Art. Q1H00209**  
U35 Bordeaux / Bordeaux



**Art. Q1H00209**  
Z46 Fucsia / Fuchsia



**Art. Q1H00209**  
D25 Rosso / Red



**Art. Q1H00209**  
D24 Arancio / Orange



**Art. Q1H00209**  
C03 Giallo / Yellow



**Art. Q1H00209**  
C09 Pistacchio / Pistachio



**Art. Q1H00209**  
Z49 Verde scuro / Dark green



**Art. Q1H00209**  
Z48 Blu / Blue



**Art. Q1H00209**  
U38 Bluette / Royal



**Art. Q1H00209**  
D28 Turchese / Turquoise



**Art. Q5I00215**  
U32 Nero / Black



**Art. Q5I00215**  
Z44 Marrone / Brown



**Art. Q5I00215**  
U33 Caffè / Coffee



**Art. Q5I00215**  
U35 Bordeaux / Bordeaux



**Art. Q5I00215**  
Z46 Fucsia / Fuchsia



**Art. Q5I00215**  
D25 Rosso / Red



**Art. Q5I00215**  
D24 Arancio / Orange



**Art. Q5I00215**  
C03 Giallo / Yellow



**Art. Q5I00215**  
C09 Pistacchio / Pistachio



**Art. Q5I00215**  
Z49 Verde scuro / Dark green



**Art. Q5I00215**  
Z48 Blu / Blue



**Art. Q5I00215**  
U38 Bluette / Royal



**Art. Q5I00215**  
D28 Turchese / Turquoise

# JERRY

## Dettagli / Details

- Regolabile con elastico
- Adjustable with elastic band

## Taglie / Sizes

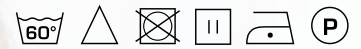
Taglia unica / One size

## Art. Q5100215

- U32 Nero / Black
- Z44 Marrone / Brown
- U33 Caffè / Coffee
- U35 Bordeaux / Bordeaux
- Z46 Fucsia / Fuchsia
- D25 Rosso / Red
- D24 Arancio / Orange
- C03 Giallo / Yellow
- C09 Pistacchio / Pistachio
- Z49 Verde scuro / Dark green
- Z48 Blu / Blue
- U38 Bluette / Royal
- D28 Turchese / Turquoise

## Tessuto / Fabric

- 100% poliestere
- 100% polyester
- 220 g / m<sup>2</sup>



Art. Q5100215  
D25 Rosso / Red



**Art. Q5I00216**  
U32 Nero / Black



**Art. Q5I00216**  
Z44 Marrone / Brown



**Art. Q5I00216**  
U33 Caffè / Coffee



**Art. Q5I00216**  
U35 Bordeaux / Bordeaux



**Art. Q5I00216**  
Z46 Fucsia / Fuchsia



**Art. Q5I00216**  
D25 Rosso / Red



**Art. Q5I00216**  
D24 Arancio / Orange



**Art. Q5I00216**  
C03 Giallo / Yellow



**Art. Q5I00216**  
C09 Pistacchio / Pistachio



**Art. Q5I00216**  
Z49 Verde scuro / Dark green



**Art. Q5I00216**  
Z48 Blu / Blue



**Art. Q5I00216**  
U38 Bluette / Royal



**Art. Q5I00216**  
D28 Turchese / Turquoise

## PANAREA

### Dettagli / Details

- Regolabile con elastico
- Adjustable with elastic band

### Taglie / Sizes

Taglia unica / One size

### Art. Q5I00216

- U32 Nero / Black
- Z44 Marrone / Brown
- U33 Caffè / Coffee
- U35 Bordeaux / Bordeaux
- Z46 Fucsia / Fuchsia
- D25 Rosso / Red
- D24 Arancio / Orange
- C03 Giallo / Yellow
- C09 Pistacchio / Pistachio
- Z49 Verde scuro / Dark green
- Z48 Blu / Blue
- U38 Bluette / Royal
- D28 Turchese / Turquoise

### Tessuto / Fabric

- 100% poliestere
- 100% polyester
- 220 g / m<sup>2</sup>



Art. Q5I00216  
Z44 Marrone / Brown



## ORTENSIA

### Dettagli / Details

- 2 tasche
- 2 pockets

### Taglie / Sizes

XS ÷ 4XL Slim Fit

### Art. Q9R00220

C02 Grigio chiaro / Light grey  
U35 Bordeaux / Bordeaux

### Tessuto / Fabric

65% poliestere 35% cotone  
65% polyester 35% cotton  
113 g / m<sup>2</sup>







**Art. Q9R00220**  
C02 Grigio chiaro / Light grey



## VIOLA

### Dettagli / Details

- 3 tasche
- Maniche ad aletta
- Ampia vestibilità

- 3 pockets
- Flap sleeves
- Large fit

### Taglie / Sizes

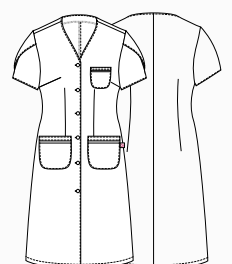
XS ÷ 3XL    Oversize

### Art. Q9R00221

Q32 Quadro nero / *Black check*  
Q35 Quadro bordeaux / *Bordeaux check*

### Tessuto / Fabric

60% cotone 40% poliestere  
60% cotton 40% polyester  
145 g / m<sup>2</sup>





## MAGNOLIA

### Dettagli / Details

- Senza tasche
- No pockets

### Taglie / Sizes

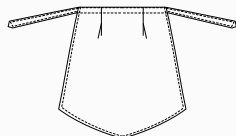
Taglia unica / One size

### Art. Q9H00224

C01 Bianco / White

### Tessuto / Fabric

100% cotone  
100% cotton  
185 g / m<sup>2</sup>



## MIMOSA

### Dettagli / Details

- Senza tasche
- No pockets

### Taglie / Sizes

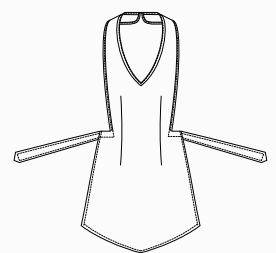
Taglia unica / One size

### Art. Q9H00225

02 Bianco / White

### Tessuto / Fabric

100% cotone  
100% cotton  
185 g / m<sup>2</sup>



# CAMELIA

## Dettagli / Details

- 2 tasche
- 2 spacchetti laterali

- 2 pockets
- 2 side vents

## Taglie / Sizes

XS ÷ 4XL Regular Fit

## Art. Q9K00222

C01 Bianco / White

## Tessuto / Fabric

65% poliestere 35% cotone

65% polyester 35% cotton

145 g / m<sup>2</sup>



## Art. Q9K00223

C02 Grigio chiaro / Light grey

U35 Bordeaux / Bordeaux

## Tessuto / Fabric

65% poliestere 35% cotone

65% polyester 35% cotton

113 g / m<sup>2</sup>



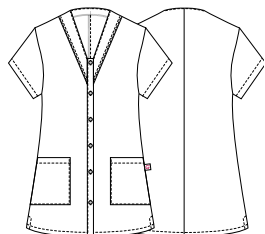
## Art. Q9K00222

C01 Bianco / White



## Art. Q9K00223

C02 Grigio chiaro / Light grey





Art. Q9K00223  
U35 Bordeaux / Bordeaux

# ALTEA

## Dettagli / Details

- 2 tasche
- Chiusura con zip rovesciata

- 2 pockets
- Inverted zip fastening

## Taglie / Sizes

XS ÷ 4XL Slim Fit

## Art. Q9K00226

C01 Bianco / White

## Tessuto / Fabric

100% cotone  
100% cotton  
185 g / m<sup>2</sup>

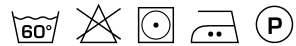


## Art. Q9K00227

C04 Salmone / Salmon  
C08 Azzurro chiaro / Light blue  
M19 Verde acqua / Acqua green

## Tessuto / Fabric

70% poliestere 30% cotone  
70% polyester 30% cotton  
132 g / m<sup>2</sup>

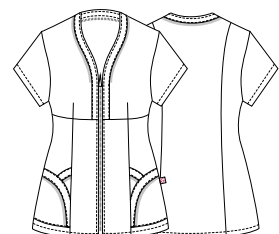


## Art. Q9K00226

C01 Bianco / White

## Art. Q9K00227

C08 Azzurro chiaro / Light blue



## Art. Q9K00227

M19 Verde acqua / Acqua green



**Art. Q9K00227**  
C04 Salmone / Salmon

# PRIMULA

## Dettagli / Details

- 2 tasche
- Maniche arrotolabili

- 2 pockets
- Roll-up sleeves

## Taglie / Sizes

XS ÷ 3XL Regular Fit

### Art. Q9K00249

C01 Bianco / White

### Art. Q9K00251

D25 Rosso / Red

## Tessuto / Fabric

65% poliestere 35% cotone

65% polyester 35% cotton

143 g / m<sup>2</sup>

### Art. Q9K00250

Q32 Quadro nero / Black check

## Tessuto / Fabric

60% cotone 40% poliestere

60% cotton 40% polyester

100 g / m<sup>2</sup>



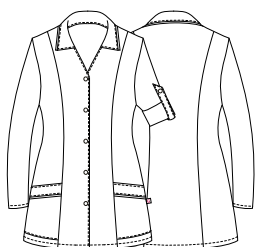
### Art. Q9K00249

C01 Bianco / White



### Art. Q9K00251

D25 Rosso / Red







**Art. Q9K00250**  
Q32 Quadro nero / Black check

# RICKY

## Dettagli / Details

- 3 tasche
- Maniche arrotolabili

- 3 pockets
- Roll-up sleeves

## Taglie / Sizes

S ÷ 4XL Comfort Fit

### Art. Q9K00252

C01 Bianco / White

### Art. Q9K00254

D25 Rosso / Red

## Tessuto / Fabric

65% poliestere 35% cotone  
65% polyester 35% cotton  
143 g / m<sup>2</sup>

### Art. Q9K00253

Q32 Quadro nero / Black check

## Tessuto / Fabric

60% cotone 40% poliestere  
60% cotton 40% polyester  
100 g / m<sup>2</sup>



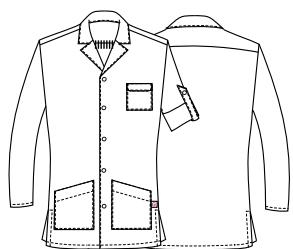
### Art. Q9K00252

C01 Bianco / White



### Art. Q9K00253

Q32 Quadro nero / Black check





Art. Q9K00254  
D25 Rosso / Red



**Art. Q9H00228**  
Q32 Quadro nero / *Black check*



**Art. Q9H00229**  
C02 Grigio chiaro / *Light grey*



**Art. Q9H00229**  
U35 Bordeaux / *Bordeaux*



**Art. Q9H00232**  
C01 Bianco / *White*



**Art. Q9H00233**  
D25 Rosso / *Red*



**Art. Q9H00270**  
C04 Salmone / *Salmon*



**Art. Q9H00270**  
C08 Azzurro chiaro / *Light blue*



**Art. Q9H00270**  
M19 Verde acqua / *Acqua green*

## ZEFIRO

### Dettagli / Details

- 3 tasche  
- Chiusura con laccetti sui fianchi

- 3 pockets  
- Closure with string on the sides

### Taglie / Sizes

Taglia unica / One size

### Art. Q9H00228

Q32 Quadro nero / Black check

### Tessuto / Fabric

60% cotone 40% poliestere  
60% cotton 40% polyester  
100 g / m<sup>2</sup>

### Art. Q9H00229

C02 Grigio chiaro / Light grey  
U35 Bordeaux / Bordeaux

### Tessuto / Fabric

65% poliestere 35% cotone  
65% polyester 35% cotton  
113 g / m<sup>2</sup>

### Art. Q9H00232

C01 Bianco / White

### Art. Q9H00233

D25 Rosso / Red  
U32 Nero / Black

### Tessuto / Fabric

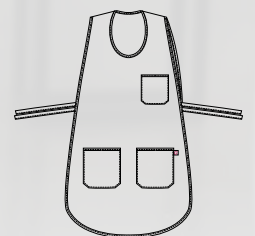
65% poliestere 35% cotone  
65% polyester 35% cotton  
143 g / m<sup>2</sup>

### Art. Q9H00270

C04 Salmone / Salmon  
C08 Azzurro chiaro / Light blue  
M19 Verde acqua / Acqua green

### Tessuto / Fabric

70% poliestere 30% cotone  
70% polyester 30% cotton  
132 g / m<sup>2</sup>



Art. Q9H00233

U32 Nero / Black

**Giblor's**

italian work/life specialist



**Health  
&  
Wellness**

La linea **Giblor's Essential** amplia l'offerta **Giblor's** e propone una gamma di prodotti ancor più competitiva per il settore **medicale e wellness**.

Grazie al know-how maturato dall'azienda in materia di tessuti e trattamenti, che ne assicurano le performance, i capi che fanno parte della linea **Essential Health&Wellness** garantiscono facilità di manutenzione e durata nel tempo, oltre che grande libertà di movimento e un fit perfetto, elementi imprescindibili per una divisa da lavoro di qualità.

La linea propone un ricco e variegato assortimento di casacche destinate al settore wellness, e molte sono le proposte per il settore medicale, dove il colore è grande protagonista, grazie soprattutto ad alcune nuove nuance molto contemporanee.

# ESSENTIAL

## COLLECTION

*The **Giblor's Essential** line expands **Giblor's** offer and offers an even more competitive range of products for the **medical and wellness** sector.*

*Thanks to the know-how gained by the company in the field of fabrics and treatments, which ensure their performance, the garments that are part of the **Essential Health&Wellness** line guarantee ease of maintenance and durability, as well as great freedom of movement and a perfect fit, essential elements for a quality work uniform.*

*The line offers a rich and varied assortment of jackets intended for the wellness sector, and there are many proposals for the medical sector, where color is a great protagonist, thanks above all to some new very contemporary nuances.*



## MIKE

### Dettagli / Details

- 3 tasche
- Abbottonatura con automatici
- Polsino con elastico

- 3 pockets
- Buttoning with press studs
- Cuff with elastic band

### Taglie / Sizes

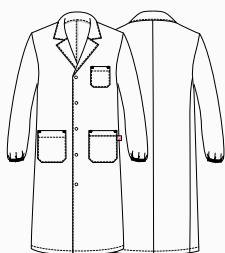
XS ÷ 4XL Regular Fit

### Art. Q3R00247

C01 Bianco / White

### Tessuto / Fabric

100% cotone  
100% cotton  
185 g / m<sup>2</sup>



## MILLY

### Dettagli / Details

- 3 tasche
- Abbottonatura con automatici
- Polsino con elastico

- 3 pockets
- Buttoning with press studs
- Cuff with elastic band

### Taglie / Sizes

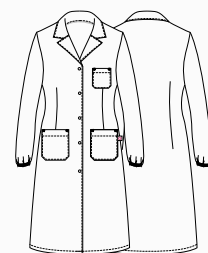
XS ÷ 3XL Regular Fit

### Art. Q3R00248

C01 Bianco / White

### Tessuto / Fabric

100% cotone  
100% cotton  
185 g / m<sup>2</sup>







## TRISTANO

### Dettagli / Details

- 3 tasche
- Polsino con elastico

- 3 pockets
- Cuff with elastic band

### Taglie / Sizes

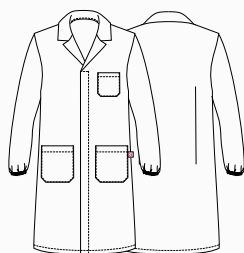
S ÷ 4XL Slim Fit

### Art. Q3R00261

C01 Bianco / White

### Tessuto / Fabric

100% cotone  
100% cotton  
185 g / m<sup>2</sup>



## ISOTTA

### Dettagli / Details

- 3 tasche
- Polsino con elastico

- 3 pockets
- Cuff with elastic band

### Taglie / Sizes

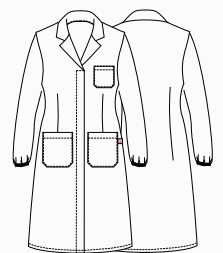
XS ÷ 3XL Regular Fit

### Art. Q3R00262

C01 Bianco / White

### Tessuto / Fabric

100% cotone  
100% cotton  
185 g / m<sup>2</sup>



# GARY

## Dettagli / Details

- 2 tasche
- Taschino sul petto
- 2 spacchetti laterali

- 2 pockets
- Breast pocket
- 2 side vents

## Taglie / Sizes

XS ÷ 4XL Slim Fit

## Art. Q3K00244

P18 Profilo azzurro / Light blue piping

P24 Profilo arancio / Orange piping

P29 Profilo verde / Green piping

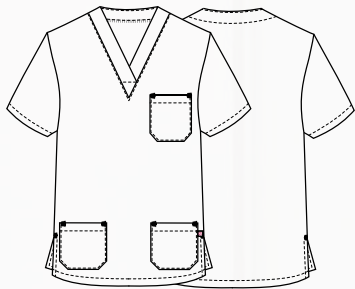
P48 Profilo blu / Blue piping

## Tessuto / Fabric

100% cotone

100% cotton

185 g / m<sup>2</sup>



PANTALONI COORDINABILI  
MATCHING PANTS

pag. 70/71

Art. Q3K00244

P24 Profilo arancio / Orange piping



**Art. Q3K00244**  
P48 Profilo blu / *Blue piping*



**Art. Q3K00244**  
P29 Profilo verde / *Green piping*



**Art. Q3K00244**  
P18 Profilo azzurro / *Light blue piping*

# JASON

## Dettagli / Details

- 2 tasche
- Taschino sul petto
- 2 spacchetti laterali

- 2 pockets
- Breast pocket
- 2 side vents

## Taglie / Sizes

XS ÷ 4XL Slim Fit

## Art. Q3K00242

C01 Bianco / White

## Art. Q3K00243

C07 Lilla chiaro / Light lilac

C09 Pistacchio / Pistachio

D24 Arancio / Orange

U38 Bluette / Royal

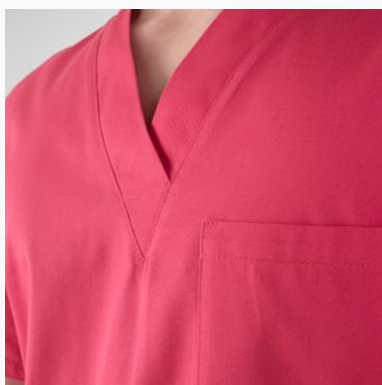
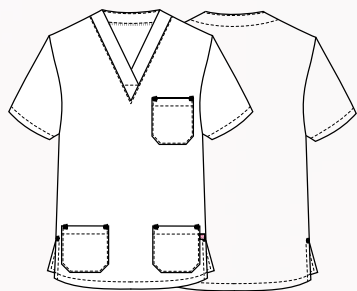
Z46 Fucsia / Fuchsia

## Tessuto / Fabric

100% cotone

100% cotton

185 g / m<sup>2</sup>



PANTALONI COORDINABILI  
MATCHING PANTS

pag. 70/71

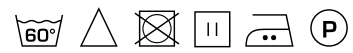
Art. Q3K00243  
Z46 Fucsia / Fuchsia



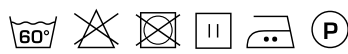
**Art. Q3K00242**  
C01 Bianco / White



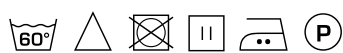
**Art. Q3K00243**  
U38 Bluette / Royal



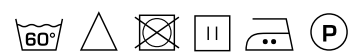
**Art. Q3K00243**  
C09 Pistacchio / Pistachio



**Art. Q3K00243**  
C07 Lilla chiaro / Light lilac



**Art. Q3K00243**  
D24 Arancio / Orange



# PITAGORA

## Dettagli / Details

- 2 tasche
- 1 tasca sul retro
- Elastico e coulisse

- 2 pockets
- 1 rear pocket
- Elasticated waistband with drawstring

## Taglie / Sizes

XS ÷ 4XL Slim Fit

## Art. Q3P00245

C01 Bianco / White

## Art. Q3P00246

C07 Lilla chiaro / Light lilac

C09 Pistacchio / Pistachio

D24 Arancio / Orange

U38 Bluette / Royal

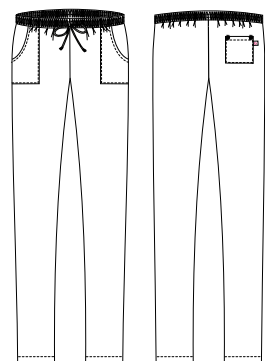
Z46 Fucsia / Fuchsia

## Tessuto / Fabric

100% cotone

100% cotton

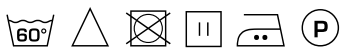
185 g / m<sup>2</sup>



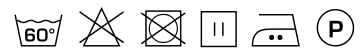
**Art. Q3P00245**  
C01 Bianco / White



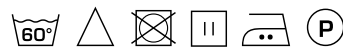
**Art. Q3P00246**  
C07 Lilla chiaro / *Light lilac*



**Art. Q3P00246**  
C09 Pistacchio / *Pistachio*



**Art. Q3P00246**  
D24 Arancio / *Orange*



**Art. Q3P00246**  
U38 Bluette / *Royal*



**Art. Q3P00246**  
Z46 Fucsia / *Fuchsia*









## health & wellness

Casacche donna

Women's tunics

# CARMEN

### Dettagli / Details

- Taschino sul petto
- 2 tasche
- Chiusura con zip rovesciata

- Breast pocket
- 2 pockets
- Inverted zip fastening

### Taglie / Sizes

XS ÷ 3XL Slim Fit

### Art. Q2K00238

C01 Bianco / White

### Art. Q2K00239

U32 Nero / Black

### Tessuto / Fabric

100% poliestere  
100% polyester  
86 g / m<sup>2</sup>



Art. Q2K00239  
U32 Nero / Black

Art. Q2K00238  
C01 Bianco / White

BIONIC  
FINISH<sup>®</sup> C<sub>6</sub>

ULTRA  
LIGHT

## MAURIZIO

### Dettagli / Details

- Taschino sul petto  
- 1 tasca
- Chiusura con zip rovesciata

- Breast pocket  
- 1 pocket
- Inverted zip fastening

### Taglie / Sizes

S ÷ 4XL Slim Fit

### Art. Q2K00259

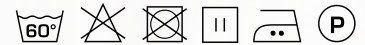
C01 Bianco / White

### Art. Q2K00260

U32 Nero / Black

### Tessuto / Fabric

100% poliestere  
100% polyester  
86 g / m<sup>2</sup>



Art. Q2K00259  
C01 Bianco / White

Art. Q2K00260  
U32 Nero / Black

## health & wellness

Casacche donna  
Women's tunics

# ELEA

### Dettagli / Details

- 2 tasche
- Bottoni a pressione
- Inserti in rete

- 2 pockets
- Press studs
- Network fabric panels

### Taglie / Sizes

XS ÷ 3XL Slim Fit

### Art. Q2K00230

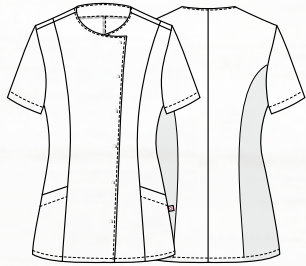
C01 Bianco / White

### Art. Q2K00231

U32 Nero / Black

### Tessuto / Fabric

65% poliestere 35% cotone  
65% polyester 35% cotton  
143 g / m<sup>2</sup>



Art. Q2K00231  
U32 Nero / Black



Art. Q2K00230  
C01 Bianco / White

## PINES

### Dettagli / Details

- 2 tasche  
- Chiusura con zip rovesciata

- 2 pockets  
- Inverted zip fastening

### Taglie / Sizes

XS ÷ 3XL Slim Fit

### Art. Q2K00255

C01 Bianco / White

### Art. Q2K00256

U32 Nero / Black

### Tessuto / Fabric

65% poliestere 35% cotone  
65% polyester 35% cotton  
143 g / m<sup>2</sup>



Art. Q2K00255  
C01 Bianco / White

Art. Q2K00256  
U32 Nero / Black

## health & wellness

Casacche donna

Women's tunics

# SARA

### Dettagli / Details

- 2 tasche
- Bottoni a pressione nascosti

- 2 pockets
- Hidden press studs

### Taglie / Sizes

XS ÷ 3XL Slim Fit

### Art. Q2K00236

C01 Bianco / White

### Art. Q2K00237

U32 Nero / Black

### Tessuto / Fabric

65% poliestere 35% cotone  
65% polyester 35% cotton  
143 g / m<sup>2</sup>



### Art. Q2K00271

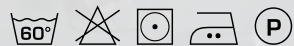
C04 Salmone / Salmon

C08 Azzurro chiaro / Light blue

M19 Verde acqua / Acqua green

### Tessuto / Fabric

70% poliestere 30% cotone  
70% polyester 30% cotton  
132 g / m<sup>2</sup>



Art. Q2K00237  
U32 Nero / Black



**Art. Q2K00236**  
C01 Bianco / White



**Art. Q2K00271**  
C04 Salmone / Salmon



**Art. Q2K00271**  
M19 Verde acqua / Acqua green



**Art. Q2K00271**  
C08 Azzurro chiaro / Light blue

# ILARIA

## Dettagli / Details

- Ampia tasca centrale
- Spacchetti sulle maniche

- Wide central pocket
- Vents on sleeves

## Taglie / Sizes

XS ÷ 3XL Regular Fit

### Art. Q2K00257

C01 Bianco / White

### Art. Q2K00258

U32 Nero / Black

## Tessuto / Fabric

65% poliestere 35% cotone  
65% polyester 35% cotton  
143 g / m<sup>2</sup>



### Art. Q2K00257

C01 Bianco / White

### Art. Q2K00258

U32 Nero / Black





## CAMERON

### Dettagli / Details

- 2 tasche
- 1 tasca sul retro
- Elastico e coulisse

- 2 pockets
- 1 rear pocket
- Elasticated waistband with drawstring

### Taglie / Sizes

XS ÷ 3XL Slim Fit

### Art. Q2P00240

C01 Bianco / White

### Tessuto / Fabric

100% cotone  
100% cotton  
200 g / m<sup>2</sup>

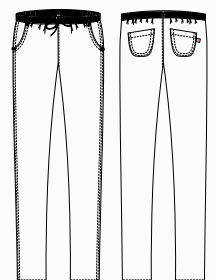


### Art. Q2P00241

U32 Nero / Black

### Tessuto / Fabric

65% poliestere 35% cotone  
65% polyester 35% cotton  
180 g / m<sup>2</sup>



# BIONIC-FINISH® C<sub>6</sub>

È il primo sistema idrorepellente completo a livello mondiale per l'industria tessile.

*It is the first complete water repellent system in the world for the textile industry.*

## BREVETTATO E SVILUPPATO PER CONFERIRE AI TESSUTI CARATTERISTICHE DI IDROREPELLENZA ALL'ACQUA, AGLI OLI E ALLE MACCHIE IN GENERALE.

Il **BIONIC-FINISH®** è ispirato alla pelle dello squalo che, contrariamente a quanto si pensi, non è liscia ma piuttosto ruvida e costituita da piccolissime scanalature longitudinali che lasciano passare l'acqua sul corpo in modo controllato, riducendone al minimo l'attrito. Grazie a questa speciale struttura, l'effetto pelle di squalo è stato implementato nei costumi da bagno per le competizioni ed è tra le scoperte più conosciute della bionica.

Il sistema **BIONIC-FINISH®** garantisce massima traspirabilità e consente al tessuto di mantenere una mano molto morbida, altissimo comfort, un'eccellente durata nel tempo e colori sempre nuovi e brillanti. Ma non è tutto: la composizione di questo agente impermeabilizzante offre il vantaggio di un'asciugatura estremamente rapida.

## PATENTED AND DEVELOPED TO GIVE THE FABRICS WATER-REPELLENT CHARACTERISTICS TO WATER, OILS AND STAINS IN GENERAL.

The **BIONIC-FINISH®** is inspired by shark skin which, contrary to popular belief, is not smooth but rather rough and consists of very small longitudinal grooves that allow water to pass over the body in a controlled manner, reducing friction to a minimum. Thanks to this special structure, the shark skin effect has been implemented in swimwear for competitions and is one of the best known discoveries in bionics.

The **BIONIC-FINISH®** system guarantees maximum breathability and allows the fabric to maintain a very soft hand, very high comfort, excellent durability and always new and bright colors. But that's not all: the composition of this waterproofing agent offers the advantage of extremely fast drying.

## BIONIC-FINISH® C<sub>6</sub>

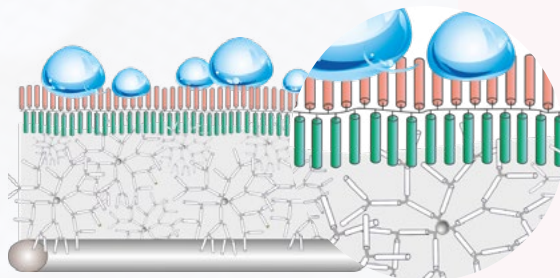
La nuova tecnologia **BIONIC-FINISH® C<sub>6</sub>** a basso impatto di fluoro, per un futuro migliore!

*The new **BIONIC-FINISH® C<sub>6</sub>** low impact fluoride technology, for a better future!*

Gocce d'acqua / Water drops  
Fluorocarburi / Fluorocarbons  
Catene di idrocarburi / Hydrocarbon chains

RUCOSTAR - **BIONIC-FINISH®**  
Dendimedri / Dendrimers

Tessuto / Fabric



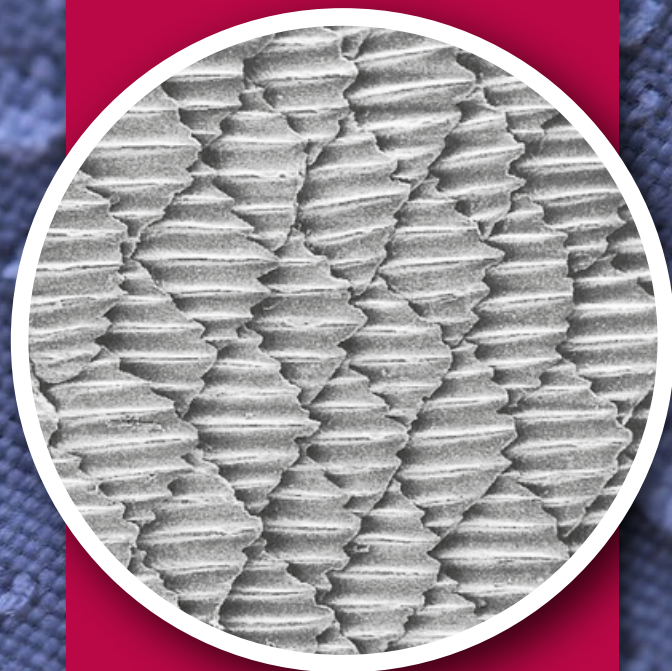
BIONIC  
FINISH® C<sub>6</sub>

BY RUDOLF GROUP

TRASPIRABILITÀ  
BREATHABILITY

DURATA  
DURATION

ASCIUGATURA RAPIDA  
QUICK DRYING



I tessuti nel nuovo **BIONIC-FINISH® C<sub>6</sub>** offrono una sensazione eccezionalmente morbida rispetto ai materiali trattati convenzionalmente.

*Fabrics made with the new **BIONIC-FINISH® C<sub>6</sub>** offer an exceptionally soft feel compared to conventionally treated materials.*

## BIONIC-FINISH® C<sub>6</sub>

Idro-oleorepellente, massimo comfort  
*Hydro-oil repellent, maximum comfort*

[www.rudolf-group.com](http://www.rudolf-group.com)

# SILVERPLUS®

Igiene, protezione e freschezza per i tessuti di domani: maggiore utilizzo, minor consumo di acqua.

*Hygiene, protection and freshness for tomorrow's fabrics: greater use, less water consumption.*

**GRAZIE AL TRATTAMENTO ANTIBATTERICO SILVERPLUS®, I TESSUTI SONO IGIENIZZATI E PROTETTI DAGLI ODORI SGRADREVOLI DEL CORPO.**

Questo trattamento innovativo crea un deposito virtualmente infinito dal quale vengono liberati ioni d'argento positivi altamente efficaci in piccole quantità, esattamente dosati quando necessario, cioè in presenza di umidità.

**Tessuti freschi anche a basse temperature di lavaggio.** Sono necessarie quantità significative di energia per il lavaggio, l'asciugatura, la stiratura dei capi professionali ad alte temperature.

**SILVERPLUS®** è il rimedio: i consumatori risparmiano energia, denaro e contribuiscono alla protezione dell'ambiente.

**THANKS TO THE SILVERPLUS® ANTIBACTERIAL TREATMENT, THE FABRICS ARE SANITIZED AND PROTECTED FROM UNPLEASANT BODY ODORS.**

*This innovative treatment creates a virtually infinite deposit from which highly effective positive silver ions are released in small quantities, exactly dosed when necessary, that is, in the presence of moisture.*



**FRESH FABRICS EVEN AT LOW WASHING TEMPERATURES.**

*Significant amounts of energy are required for washing, drying and ironing professional garments at high temperature.*

*SILVERPLUS® is the remedy consumers save energy, money and contribute to the protection of the environment.*

**Tessuto assorbi-sudore con sistema protettivo SILVERPLUS®, ottimale evaporazione dell'umidità sulla superficie del tessuto**

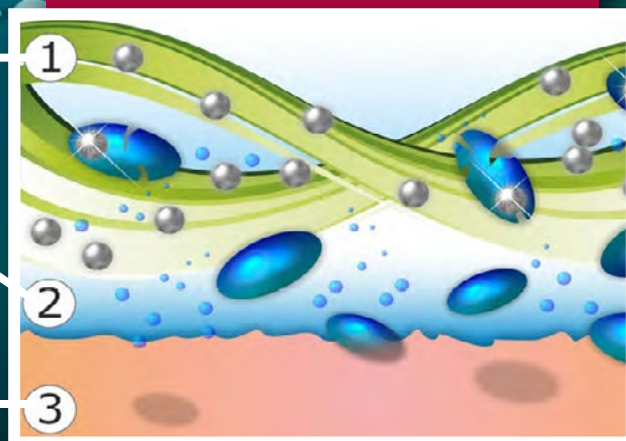
**Sweat-absorbing fabric with SILVERPLUS® protective system, optimal evaporation of moisture on the surface of the fabric**

**Evaporazione dell'umidità tra pelle / tessuto**

**Evaporation of moisture between leather / fabric**

**Processo di produzione del sudore**

**Sweat production process**



**SILVER+**

BY RUDOLF GROUP

Il tessuto trattato con **SILVERPLUS®** mostra una riduzione batterica del 99,9% dopo 100 cicli di lavaggio a 60° C e resiste anche al lavaggio a secco.

È stato dimostrato che l'uso di **SILVERPLUS®** non ha effetti negativi sull'ambiente.

- Resistente ai lavaggi, anche a secco
- Non altera il naturale equilibrio della pelle
- Non influenza lo spurgo biologico nel trattamento delle acque reflue

**ANTIMICROBICO  
ANTIMICROBIAL**

**EFFETTO FRESCHEZZA  
FRESHNESS EFFECT**

**ECOLOGICO  
ECOLOGICAL**

*The fabric treated with SILVERPLUS® shows a bacterial reduction of 99.9% after 100 washing cycles at 60 ° C and is resistant to washing and dry cleaning.*

*It has been shown that the use of SILVERPLUS® has no negative effects on the environment.*

- Resistant to washing, even when dry
- Does not alter the natural balance of the skin
- Does not affect biological purge in wastewater treatment

Uomo / Man															
S		M		L		XL		XXL		XXXL		4XL		5XL	
42	44	46	48	50	52	52	54	54	56	58	60	62	64	64	64

Donna / Woman																	
XS		S		M		L		XL		XXL		XXXL		4XL		5XL	
40	42	42	44	44	46	48	50	52	54	54	56	58	60	60	62	62	62

Donna / Woman																	
I		II		III		IV											
XS - S		M - L		XL - XXL		3XL - 4XL											

Camicie / Shirts																	
XS		S		M		L		XL		XXL							
35	36	37	38	39	40	41	42	43	44	45	46						

Le misure sopra riportate sono indicative in quanto possono variare a seconda del modello e della vestibilità, per motivi di modellistica e di attualità. *The above measures can change according to the different styles and for design reasons.*

**CONSIGLI TECNICI**

Per una buona durata dei capi sono consigliabili i seguenti accorgimenti:

- 1**  
Lavare i capi in acqua tiepida per almeno due volte prima di procedere con modifiche sartoriali.
- 2**  
Non lasciare i capi in ammollo.
- 3**  
Non é consigliabile usare prodotti chimici e in caso di necessità usare una modica quantità di candeggina (proporzione massima del 3%) solo su tessuti tinti in filo o color bianco. La ditta Giblor's si esonera da responsabilità per scolorimenti o usure dei tessuti, causati dall'uso improprio di eventuali prodotti chimici.
- 4**  
Per gli stampati non strofinare né spazzolare.
- 5**  
Il puro cotone prevede un ritiro del 3% massimo.
- 6**  
Per lo stiro attenersi alle basse temperature per i tessuti misti e sintetici; per il cotone, invece potranno essere usate temperature più elevate.
- 7**  
Mai procedere a smacchiature locali, pena il deterioramento dei tessuti.
- 8**  
I capi muniti di chiusura lampo vanno allacciati completamente prima del lavaggio in lavatrice.
- 9**  
Non porre mai a contatto la chiusura lampo con fonti di calore.

**TECHNICAL ADVICES**

*For a well wearing of the clothes please read the following suggestions:*

- 1**  
*Wash the clothes in lukewarm water at least for two times before before proceeding with sartorial changes.*
- 2**  
*Never leave to soak.*
- 3**  
*If necessary, use a little quantity of bleach (maximum proportion of 3%) only for white and yarn dyed fabrics. Giblor's is not responsible for the fading or wear of the fabrics, due to an inappropriate use of chemical product.*
- 4**  
*For printed clothes do not rub and do not brush.*
- 5**  
*Pure cotton will have a shrinkage of max 3%.*
- 6**  
*How to iron: for the mixed and synthetic clothes use low temperature; for the cotton you can use higher temperature.*
- 7**  
*In order to avoid the deterioration of the fabrics, don't remove stains locally*
- 8**  
*Zip up all the clothes before washing them in the washing machine.*
- 9**  
*Never place the zip in contact with heat sources.*



## Lavaggio ad acqua / Water washing

La vaschetta è il simbolo grafico usato per le informazioni relative al lavaggio in acqua.  
The basin is the symbol used for information relating to water washing.

 <p>Lavaggio delicato Gentle wash</p>	 <p>Lavaggio 30° / 40° / 60° / 95°. Wash 30° / 40° / 60° / 95°.</p>	 <p>Lavaggio a mano con temperatura massima di 40°. Il capo non deve essere strizzato. The garment must be hand-washed, the temperature must not exceed 40°C. The garment must not be wrung.</p>	 <p>Non lavare. Do not wash.</p>
--	--	---	---






## Candeggio / Bleaching

Il triangolo è il simbolo del candeggio al cloro.  
The triangle is the chlorine bleaching symbol.

 <p>È permesso l'uso di qualsiasi candeggiante diluito al 3%. It is allowed the use of any bleach diluted to 3%.</p>	 <p>Non candeggiare. Do not bleach.</p>
---	--

## Stiratura / Ironing

Il ferro da stiro è il simbolo relativo alle informazioni sulla stiratura. La temperatura ideale per ogni capo è indicata da punti neri riportati sul ferro.  
The iron is the symbol used for information relating to ironing. The black dots indicate the suitable temperature.

 <p>Stiro temperatura massima 200° Max ironing temperature 200°</p>	 <p>Stiro temperatura massima 150° Max ironing temperature 150°</p>	 <p>Stiro temperatura massima 110° Max ironing temperature 110°</p>	 <p>Non stirare. Do not iron.</p>	 <p>Non stirare a vapore. Do not steam iron.</p>
--	--	--	--	---

## Lavaggio a secco / Dry cleaning

Il cerchio è il simbolo grafico relativo al lavaggio a secco e i segni riportati all'interno indicano il tipo di solvente adatto al tessuto.  
The circle is the dry-cleaning symbol and the signs on the inside indicate the suitable solvent-type.

 <p>Lavare a secco con qualsiasi solvente. Dry clean using any solvent.</p>	 <p>Lavaggio delicato a secco con qualsiasi solvente. Gentle dry clean using any solvent.</p>	 <p>Non lavare a secco. Do not dry clean.</p>
--	--	--

## Asciugatura / Drying

I simboli dell'asciugatura sono rappresentati da un quadrato.  
The drying symbols are represented by a square.

 <p>Asciugare a tamburo a bassa temperatura. Tumble dry low temperature.</p>	 <p>Non asciugare a tamburo. Do not tumble dry.</p>	 <p>Asciugatura verticale senza spremitura. Vertical drying without squeezing.</p>
---	--	---

- A** **ADRIANO** pag. 18
- ALTEA** pag. 54 - 55
- ANCONA** pag. 23
- ANDY** pag. 25
- AUGUSTIN** pag. 8 - 9
  
- B** **BANDANA** pag. 24
- BARI** pag. 23 - 32 - 33
  
- C** **CAMELIA** pag. 52 - 53
- CAMERON** pag. 81
- CAPPELLO SCUOLA** pag. 24
- CAPRI** pag. 40 - 41
- CARMEN** pag. 74
- CELINE** pag. 10 - 11
- COPRICAPO** pag. 25
  
- E** **ELEA** pag. 76
  
- G** **GARY** pag. 66 - 67
- GIUNONE** pag. 22
  
- I** **ILARIA** pag. 80
- ISOTTA** pag. 65
  
- J** **JASON** pag. 68 - 69
- JERRY** pag. 44 - 45
  
- K** **KLIMT** pag. 24
  
- L** **LATINA** pag. 42 - 43
- LIPARI** pag. 34 - 35
  
- M** **MAGNOLIA** pag. 51
- MATERA** pag. 23 - 30 - 31
- MAURIZIO** pag. 75
- MIKE** pag. 64
- MILLY** pag. 64
- MIMOSA** pag. 51
- MONET** pag. 24
  
- O** **ORTENSIA** pag. 48 - 49
  
- P** **PANAREA** pag. 46 - 47
- PATRIZIO** pag. 12 - 13 - 16
- PINES** pag. 77
- PITAGORA** pag. 70 - 71
- PLUTONE** pag. 20 - 21
- POSITANO** pag. 36 - 37
- PRIMULA** pag. 56 - 57
- PUB** pag. 38 - 39
  
- R** **RICKY** pag. 58 - 59
  
- S** **SARA** pag. 78 - 79
- SUSI** pag. 14 - 15 - 17
  
- T** **TOMMASO** pag. 19
- TORCIONE** pag. 25
- TRISTANO** pag. 65
  
- V** **VIOLA** pag. 50
  
- Z** **ZANTE** pag. 28 - 29
- ZEFIRO** pag. 60 - 61





**SCOPRI LE COLLEZIONI SU [GIBLORS.COM](https://www.giblor.com)**

**CHEF STYLE / HO.RE.CA. & SERVICES  
HEALTH & CARE / WELLNESS & BEAUTY  
CALZATURE**

**VIEW COLLECTIONS ON [GIBLORS.COM](https://www.giblor.com)**

**CHEF STYLE / HO.RE.CA. & SERVICES  
HEALTH & CARE / WELLNESS & BEAUTY  
FOOTWEAR**



**Giblor's**  
italian work*life* specialist

è un'azienda del gruppo

**ROSSINI.**



Viale dei Trasporti, 6/A - 6/B  
41012 CARPI (MO) - Italy  
Tel. +39.059.654.602 Fax + 39.059.654.634  
[www.giblors.com](http://www.giblors.com) [info@giblors.com](mailto:info@giblors.com)

